



PROJECT NAME	The Shadow Box
CLIENT	Alexander Tamas
CATEGORY	Private Residence
LOCATION	Dubai, UAE
SCOPE OF WORK	Design and Execution
PROJECT DIRECTOR	Ramzi Jizi
LEAD DESIGNER	Darine Jabeili
PROJECT CONTRACTOR	Rasul Interior Decoration
BUDGET	8 Millions USD

DESCRIPTION

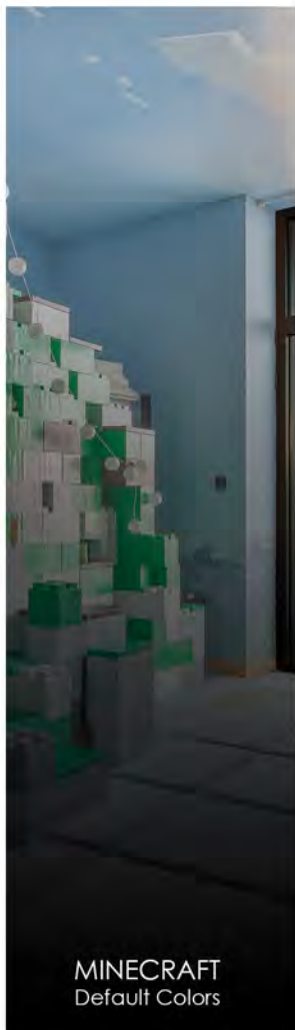
The unconventional client's lifestyle lead us to sit with them on endless discussions to guide our design and adhere to their best needs. This penthouse was created for a young and sophisticated couple with their own understanding of aesthetics and design. Coupled with the clients' desires, daylight was delicately directed into the space, creating different scenarios and ambiances.



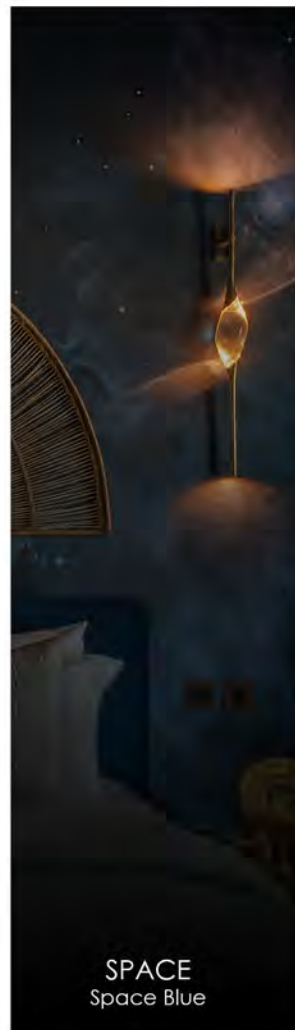
RAW BOHEMIAN
White Shadow



LIBRARY SPACE
Burgundy Brown



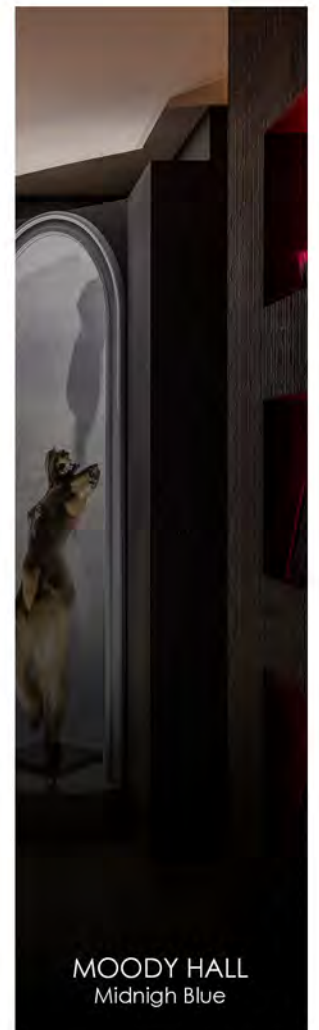
MINECRAFT
Default Colors



SPACE
Space Blue



FIRE ROOM
Blood Red



MOODY HALL
Midnight Blue



The penthouse is located on a man-made island in one of the most prestigious complex residences of Dubai. The penthouse's terrace has a panoramic view expanding from sea to shore, framing the skyline of Dubai. Having a long continuous façade, constantly exposed to sunlight all year long, our first reaction was to play interact with the sun rays to create various moods and scenarios. Metal panels with a brass finish slide along the glass allowing for a playful relationship with the sun. The custom pattern displayed on those panels was inspired by tree leaves overlapping and intersecting with each other.



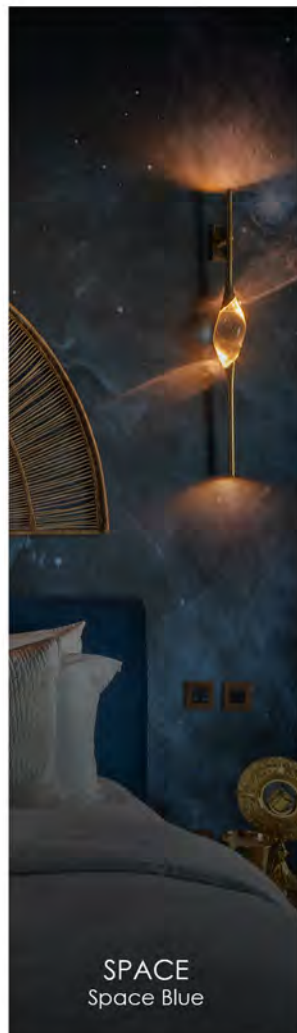
RAW BOHEMIAN
White Shadow



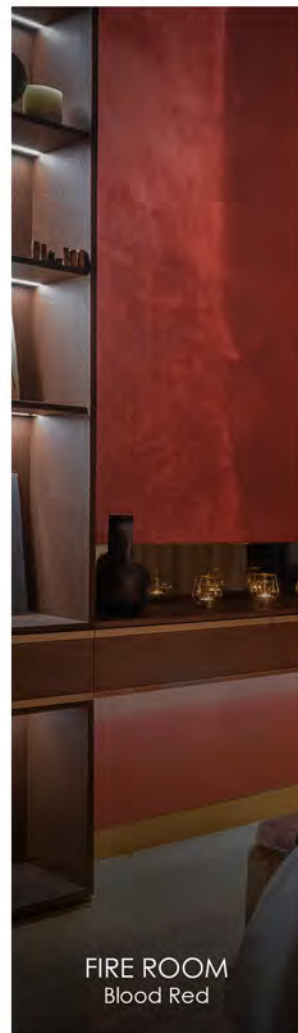
LIBRARY SPACE
Burgundy Brown



MINECRAFT
Default Colors



SPACE
Space Blue



FIRE ROOM
Blood Red



MOODY HALL
Midnight Blue

Digging deeper in the relationship with nature, we have decided to work Nature. A multi-level travertine platform elevates the reception space allowing for a Moroccan seating layout.

Colored pendant lights drop from the ceiling on one side, while on the other, the travertine platform embodies a 3 tons single carved rock that acts as a giant planter. Furniture items and craftsmanship of this penthouse were imported from all over the world, like the volcanic basalt from Pompeii, the wooden side tables from Bali, various fabrics from New Zealand and Asian paintings from North Korea and Japan.







The sophisticated side of the client shows the most in the Sherlock Library room, which houses an extremely rare collection of first edition books from the 18th century, and a one-of-a-kind hand drawn map representing planet Earth as literally described in the Bible.

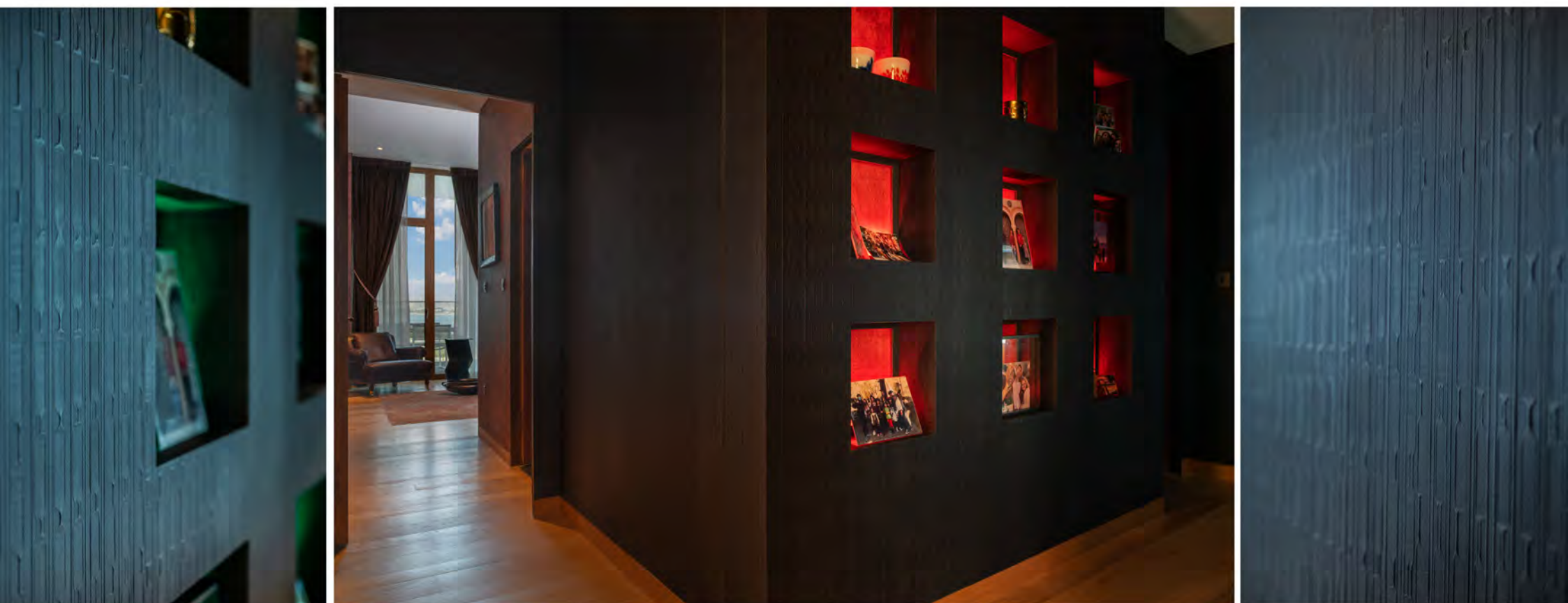




Each room in this project encompasses a bespoke design redefining the living experience, from the moody corridor lights constantly adapting to the client's mood, to the red master bedroom representing the energetic aspect of their character ending with the space room referencing the client's interest in space. In fact, they are taking part of the construction of habitats on the moon.



The walls of this penthouse's corridor were covered with handmade painted wallpaper.



HISTORY and CONTEMPORANEITY, centuries of Italian decorative tradition, melted with the most contemporary and elegant design, with the modern standards of quality and reproducibility, they are at the base of our project of our actual production.

The COLLECTIONS are completely handmade and painted, developed and created in our Italian workshop. We use precious MATERIALS: non-woven fabric and, in some cases, pure cellulose paper resistant to embossing. We use pigment pastes, in powder an natural clays such as ochre, scorched earth and English red. The resins that bind the pigment to the frame are artificial or natural such as linseed oil, casein, natural rubber and beeswax. The PRODUCTION is 100% made in Italy and in our workshop, the non-woven fabric panels are laid out on tables 7 meters long and hand made by paint brushes, sponges and brushes in order to reach the required decoration.













Upon our client's request, we designed and built a minecraft room, that consists of a giant playground castle integrating the beds of the four children. The floor has been padded with cushion tiles to enhance the playground's experience. The wallpaper represents characters inspired by the children's behaviour and own personalities.



USEFUL LINKS

www.idea-art.com

<https://www.idea-art.com/portfolio/p257-the-shadow-box/>

<https://www.youtube.com/watch?v=3rPhhcfkYHk>

