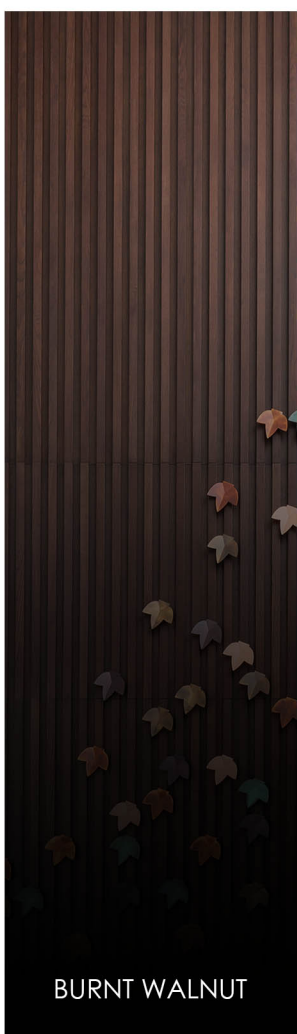




PROJECT NAME	Residence A
CLIENT	Michel Aziz
CATEGORY	Private Residence
LOCATION	Sharjah, UAE
SCOPE OF WORK	Design and Execution
PROJECT DIRECTOR	Ramzi Jizi
LEAD DESIGNER	Darine Jabeili
PROJECT FIT OUT CONTRACTOR	Managed by IAIA
BUDGET	5.5 Millions AED (1.5 Million USD)
DESCRIPTION	We embarked on a journey to redefine simplicity and minimalism. Few parameters lead the concept of our design, from the choice of material to the integration of vegetation and light.



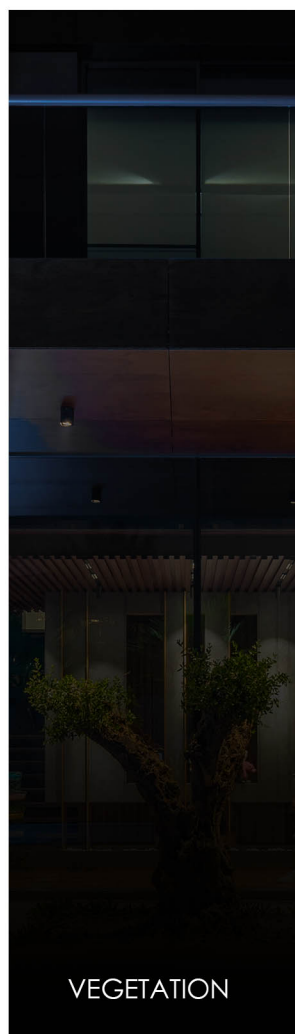
BURNT WALNUT



BRASS



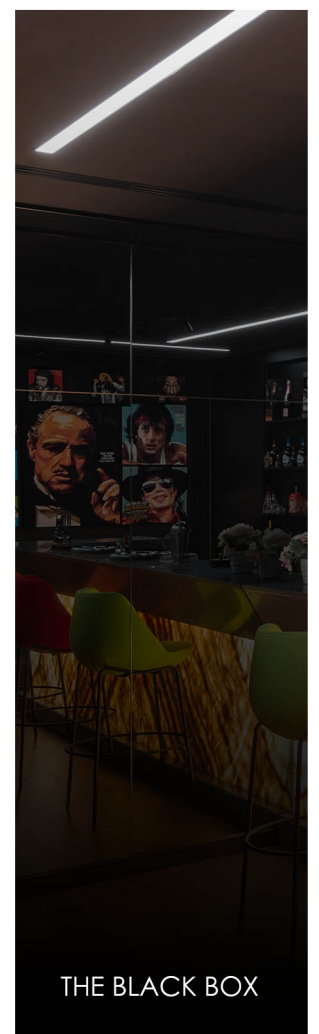
WHITE MARBLE



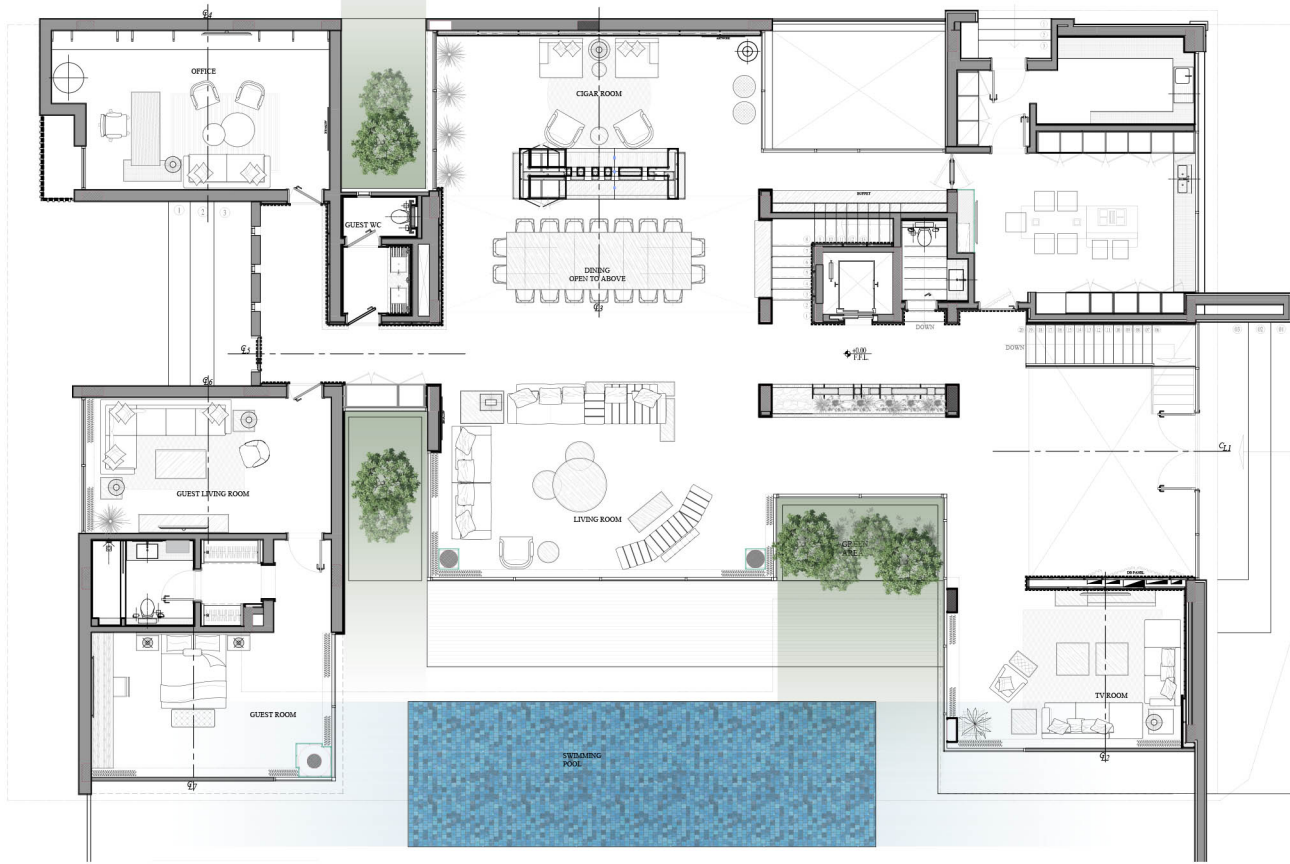
VEGETATION



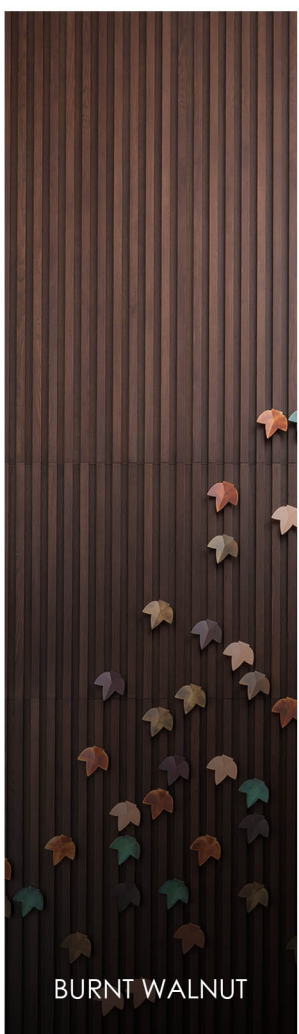
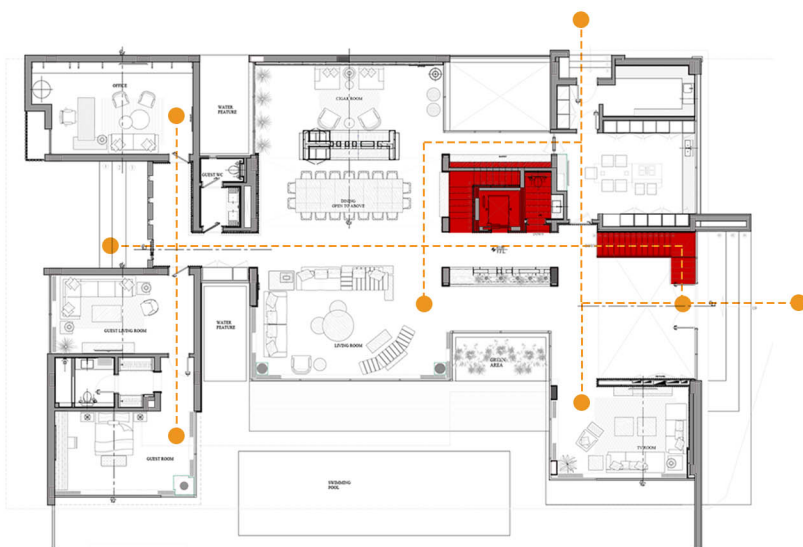
NATURAL LIGHT



THE BLACK BOX



We embarked on a journey to redefine simplicity and minimalism. Few parameters lead the concept of our design, from the choice of material to the integration of vegetation and light. We have worked on this project inside out, sculpting spaces according to form and function while allowing each material to create the requested atmosphere.



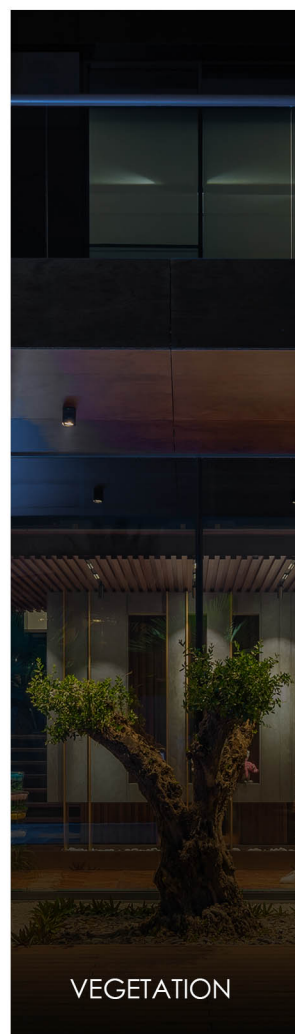
BURNT WALNUT



BRASS



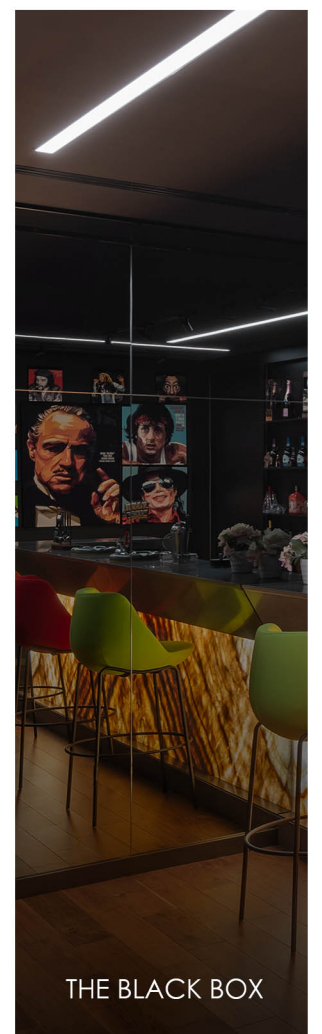
WHITE MARBLE



VEGETATION



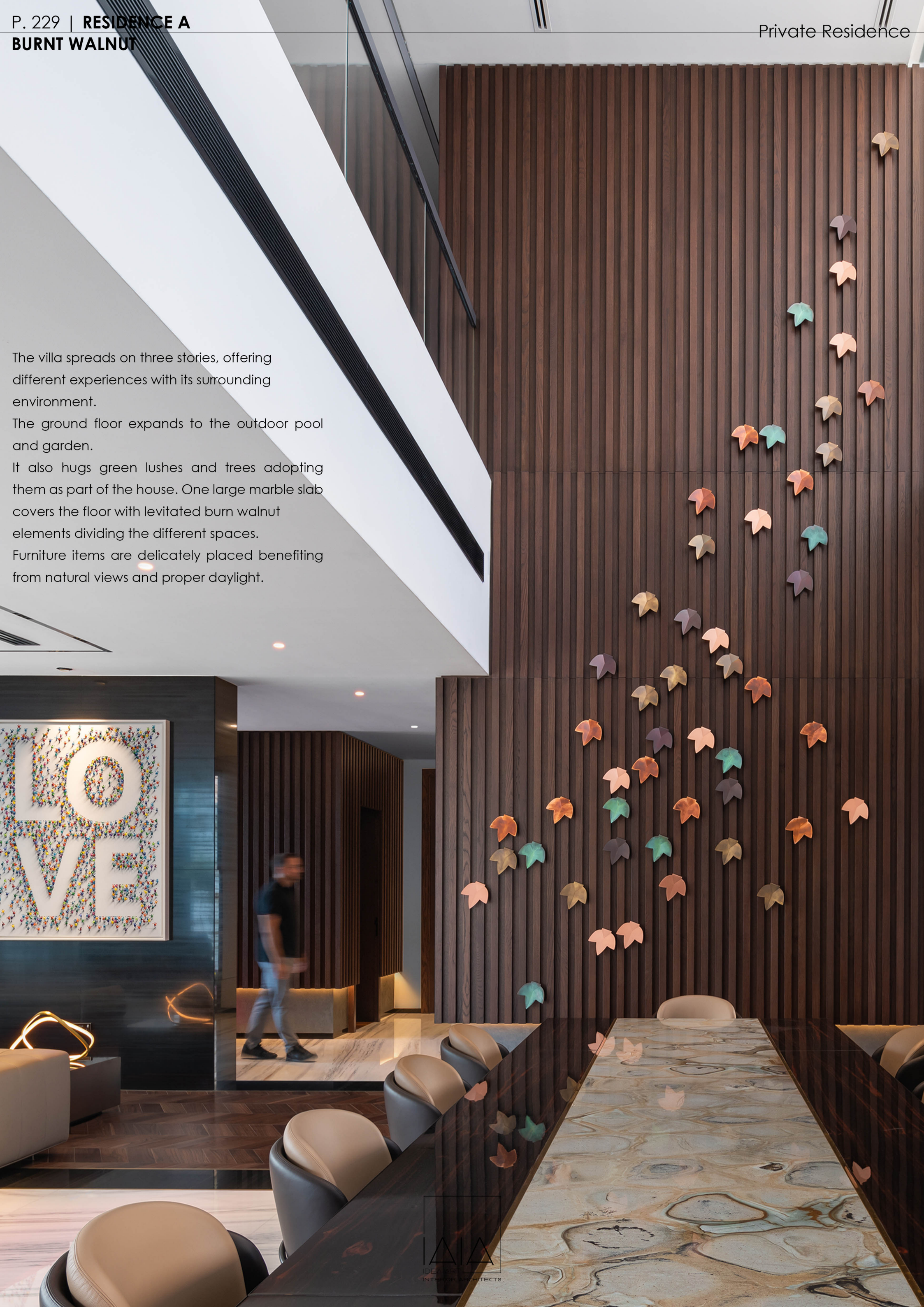
NATURAL LIGHT



THE BLACK BOX



The villa spreads on three stories, offering different experiences with its surrounding environment. The ground floor expands to the outdoor pool and garden. It also hugs green lushes and trees adopting them as part of the house. One large marble slab covers the floor with levitated burnt walnut elements dividing the different spaces. Furniture items are delicately placed benefiting from natural views and proper daylight.





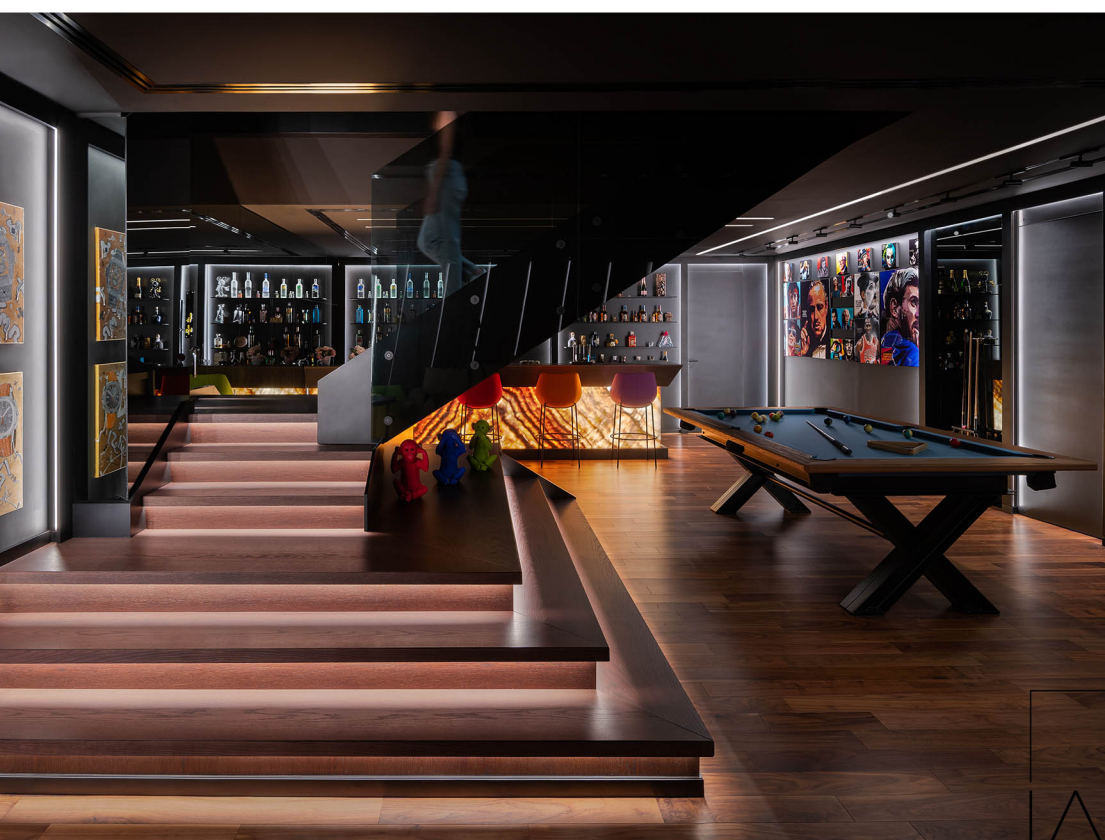
The first floor follows the same logic as the ground floor in terms of light penetration and horizontal circulation, while offering more privacy through warmer flooring and wood cladding. Spaces of the second floor connect with the lower level through double height spaces and passages. They also overlook the garden and the pool below.



From the main entrance, a disruption of the marble slab links the ground floor to the basement. A clear change of material and disconnection and light give the basement a different feel and atmosphere. A home playground designed to suit the clients' needs and hobbies. The bar, home theater, gym and the playroom are crafted and designed for leisure and entertainment.









USEFUL LINKS

www.idea-art.com

<https://www.idea-art.com/portfolio/229-residence-a/>

<https://www.youtube.com/watch?v=3rPhhcfkYHk>

